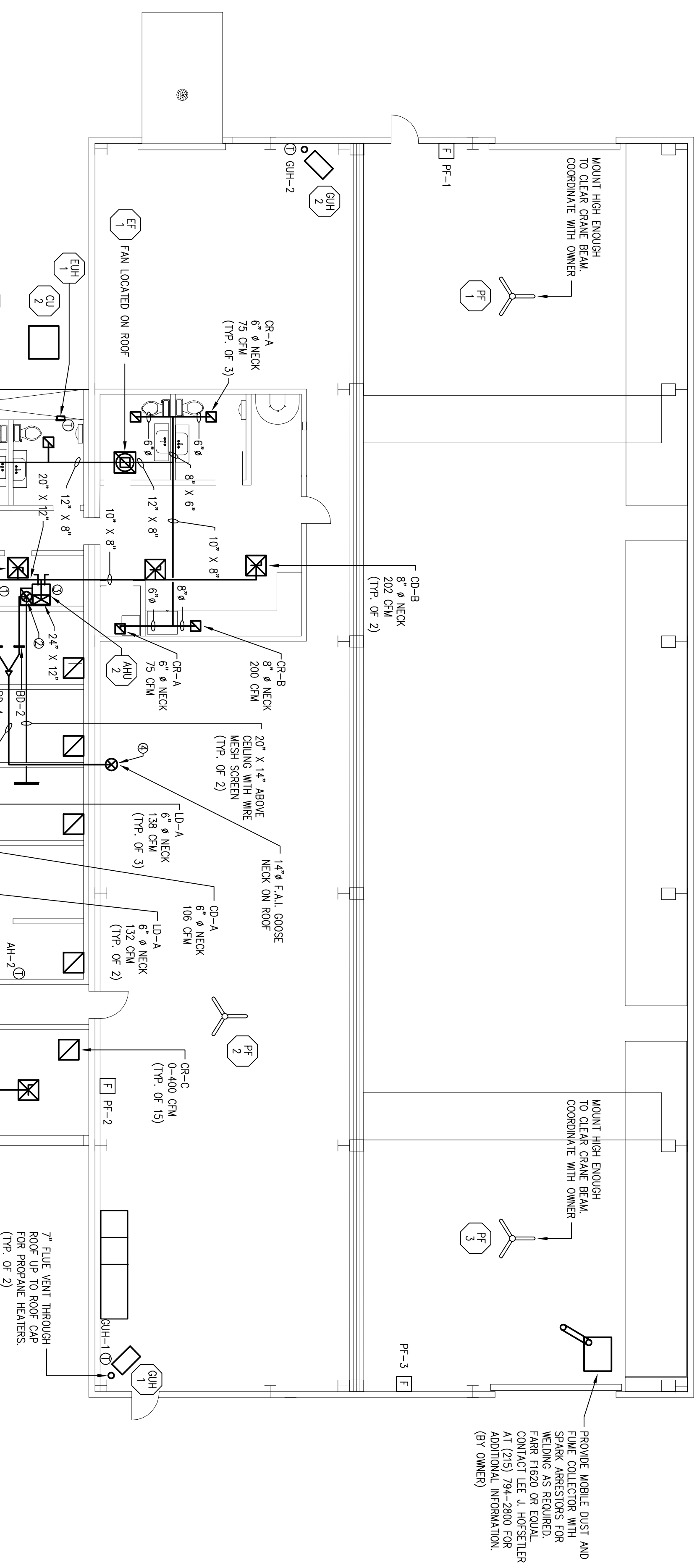


no.	description	date
-	Issued For Permit & Construction	6/03/09
-	Issued For Client Review	3/24/09
revisions		



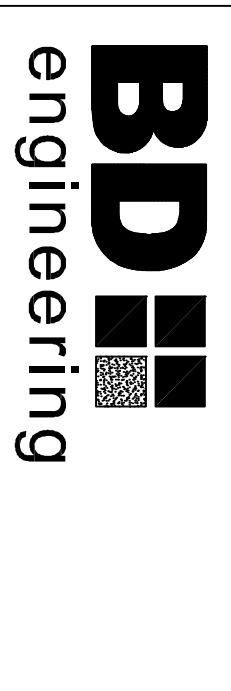
- GENERAL NOTES:**
1. THE EXACT MOUNTING HEIGHTS AND LOCATIONS OF ALL HVAC EQUIPMENT SHALL BE FIELD VERIFIED AND COORDINATED WITH ALL OTHER MECHANICAL, ELECTRICAL, ARCHITECTURAL AND STRUCTURAL SYSTEMS.
  2. VERIFY ALL EQUIPMENT VOLTAGES WITH THE ELECTRICAL CONTRACTOR PRIOR TO ORDERING EQUIPMENT.
  3. PROVIDE DISCONNECT SWITCHES FOR ALL HVAC EQUIPMENT INCLUDING WEATHERPROOF DISCONNECT AS REQUIRED.
  4. PROVIDE PHASE LOSS PROTECTION FOR ALL POLY-PHASE MOTOR DEVICES.
  5. THE FINAL LOCATION OF AIR DEVICES MUST BE COORDINATED WITH THE REFLECTED CEILING PLAN AND ALL OTHER MECHANICAL, ELECTRICAL, FIRE PROTECTION, ARCHITECTURAL, AND STRUCTURAL SYSTEMS.
  6. PROVIDE FLEXIBLE CONNECTIONS AT ALL DUCT CONNECTIONS TO VARYING EQUIPMENT. THESE CONNECTIONS SHALL BE INSTALLED IN CLOSE PROXIMITY TO SUCH EQUIPMENT.
  7. ALL CEILING MOUNTED EQUIPMENT MUST BE SUPPORTED DIRECTLY FROM BUILDING STRUCTURE WITH CEILING SPRING AND RECEPINE-IN-SHEAR HANGERS AND ROOF PROVIDE SUPPLEMENTARY STEEL AS REQUIRED TO ADEQUATELY SUPPORT THE LOAD.

- PROJECT NOTES:**
- ① CONTRACTOR TO PROVIDE 10" DIA. DUCT TO COSENECK UP ON ROOF WITH INSECT SCREEN TO RETURN OF MAKEUP DAMPER (BD-1) WHERE SHOWN.
  - ② CONTRACTOR TO PROVIDE 12" DIA. DUCT TO COSENECK UP ON ROOF WITH INSECT SCREEN TO RETURN OF FDU-2 DAMPER (BD-2) WHERE SHOWN.
  - ③ PIPE CONDENSATE TO PROVIDED STANDPIPE. SEE DRAWING P21 FOR LOCATION OF STANDPIPE.
  - ④ FAL COSENECK TO PENETRATE SHOP ROOF SO TO NOT BE VISIBLE FROM STREET.

**New Shop & Office Building for Shupper-Brickle Equipment Co.**  
**11 Burnt Tavern Road**  
**Millstone Township, NJ 08535**  
**Block: 57**  
**Lot: 14.01**

BRIAN D. TANNENHAUS

NJ PROFESSIONAL ENGINEER  
 NO. 0E 45907  
 DATE: June 3, 2009



NJ CERTIFICATE OF AUTHORIZATION - 240A28115100  
 BD Engineering, LLC  
 1825 Swarthmore Ave. Lakewood, NJ 08701  
 Project No. 080056

DRAWN BY:	CHECKED BY:	SCALE:
EM	KF	1/8"=1'0"

DRAWING TITLE  
**HVAC FLOOR & ROOF PLAN**

DRAWING NO.  
**H2.1**